

Gujarat Arts & Commerce College(EVE)

Students Satisfaction Ratio

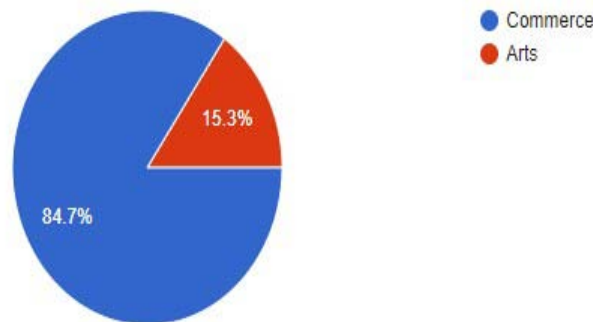
2.7

Students were given an online feedback form. There were total 20 QUESTIONS for which feedback was requested regarding the overall impression of the institute. For example, teachers, teaching methods, syllabus, various facilities provided at the campus, extra-curricular activities etc. They were required to provide their feedback by one of the five scales. Here we use for different words for i. e. 'Excellent', 'Always Effective' , "Every time ," 'Significantly', 'Very Good', 'Good', 'Average' and 'Needs Improvement'. The detailed analysis with the help of graphics is as follows from below.

1. What subject area are you currently pursuing?

What subject area are you currently pursuing?

379 responses

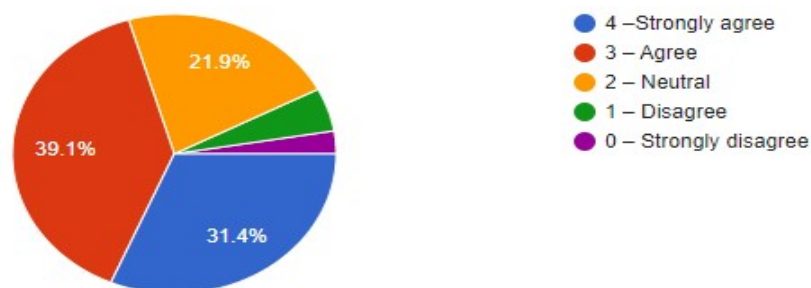


From the above chart indicate 84.7% of students from Commerce Faculty and remaining from Arts Faculty.

2. The overall quality of teaching- learning process in your institute is very good.

The overall quality of teaching-learning process in your institute is very good.

379 responses

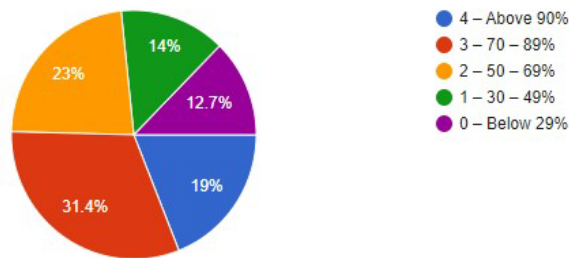


From the above chart indicate that the overall quality of teaching learning process in our institute. 31.4% of total responses strongly agree, 39.1% students agree with the question and 21.9% of the students give Neutral responses for this statement. Only 7.6% of students from total responses give negative response. On the basis of above description 70.5% students from total responses give positive response. So overall quality of teaching – learning process in our institute is very good.

3. What percentage of teachers use ICT tools such as LCD projectors, Multimedia, etc.

What percentage of teachers use ICT tools such as LCD projector, Multimedia, etc. while teaching.

379 responses

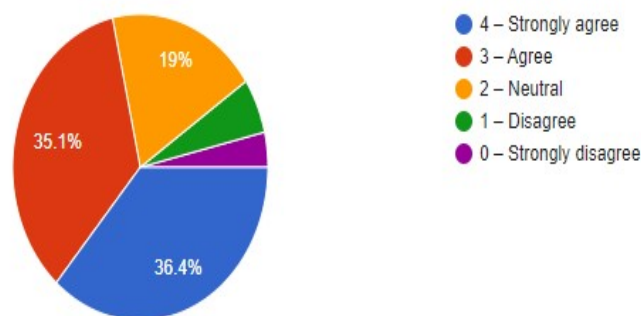


From the above chart indicate that teachers use ICT tools for teaching in our institute. 19% of students from total responses give their responses 90% of teacher uses ICT tools. 31.4% students agree with 70 -89% of teachers uses ICT tools, and other students give their responses teacher uses ICT tools between 50 to 69%. 12.7% of students from total responses give their opinion about teacher uses ICT tool Below 29%. On the basis of above description 73.4% students from total responses give positive response.

4. **Teachers** encourage you to participate in extracurricular activities.

Teachers encourage you to participate in extracurricular activities.

379 responses

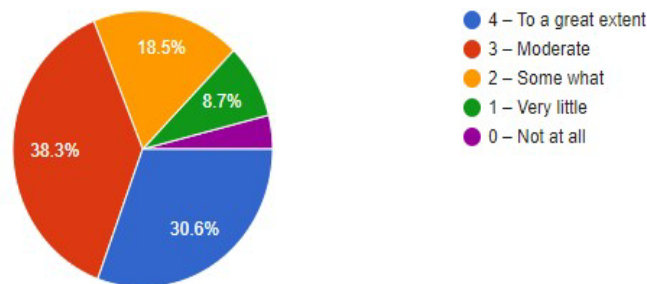


From the above chart indicate that Teachers encourage you to participate in extracurricular activities. 36.4% of students from total responses give their responses strongly agree. 35.1% students agree with Teachers encourage them to participate in extracurricular activities. 19% of students from total responses give their responses neutral. On the basis of above description 90.5% students from total responses give positive response.

- The institute/teachers use student centric methods, such as experiential learning, participative learning and problem solving methodologies for enhancing learning experiences.

The institute/ teachers use student centric methods, such as experiential learning, participative learning and problem solving methodologies for enhancing learning experiences.

379 responses

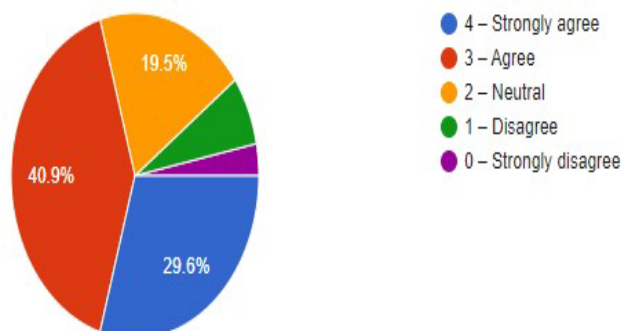


From the above chart indicate that the institute/teachers use student centric methods, such as experiential learning, participative learning and problem solving methodologies for enhancing learning experiences. 30.6% of students from total responses give their responses to a great extent. 38.3% of students from total responses give their responses moderate. 18.5% of students from total responses give their responses some what. 8.7% of students from total responses give their responses very little. On the basis of above discription 87.4% students from total responses give positive response.

- The institution makes effort to engage students in the monitoring, review and continuous quality improvement of the teaching learning process.

The institution makes effort to engage students in the monitoring, review and continuous quality improvement of the teaching learning process.

379 responses

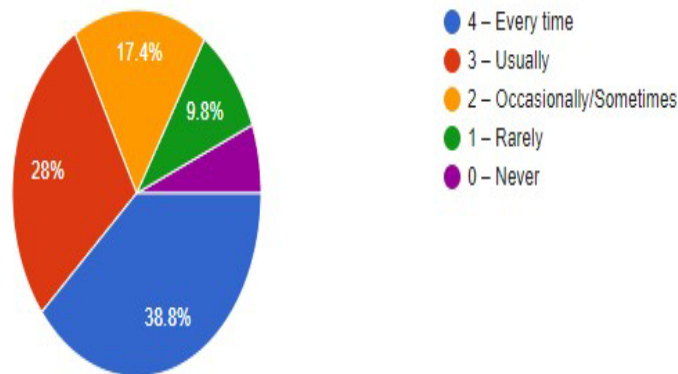


From the above chart indicate that the institution makes effort to engage students in the monitoring, review and continuous quality improvement of the teaching learning process. 29.6% of students from total responses give their responses strongly agree. 40.9% of students from total responses give their responses agree. 19.5% of students from total responses give their responses neutral. On the basis of above discription 90.% students from total responses give positive response.

7. Teachers are able to identify your weaknesses and help you to overcome them.

Teachers are able to identify your weaknesses and help you to overcome them.

379 responses

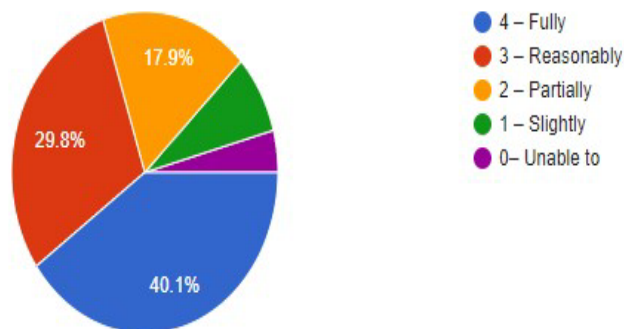


From the above chart indicate that teachers are able to identify your weaknesses and help you to overcome them. 38.8% of students from total responses give their responses every time. 28% of students from total responses give their responses usually. 17.4% of students from total responses give their responses occasionally/sometimes. On the basis of above description 84.2% students from total responses give positive response.

8. The teachers identify your strengths and encourage you with providing right level of challenges.

The teachers identify your strengths and encourage you with providing right level of challenges

179 responses

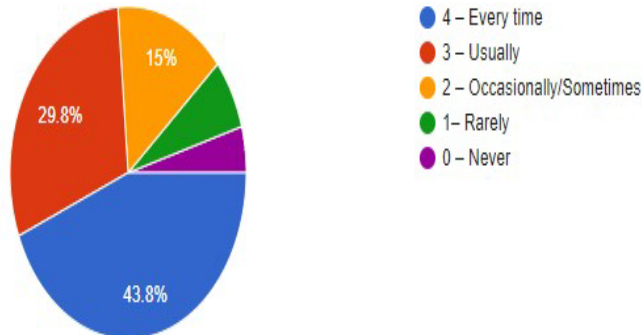


From the above chart indicate that teachers are able to identify your weaknesses and help you to overcome them. 40.1% of students from total responses give their responses fully. 29.8% of students from total responses give their responses reasonably. 17.9% of students from total responses give their responses partially. On the basis of above description 87.8% students from total responses give positive response.

9. The teachers illustrate the concepts through examples and applications.

The teachers illustrate the concepts through examples and applications.

379 responses

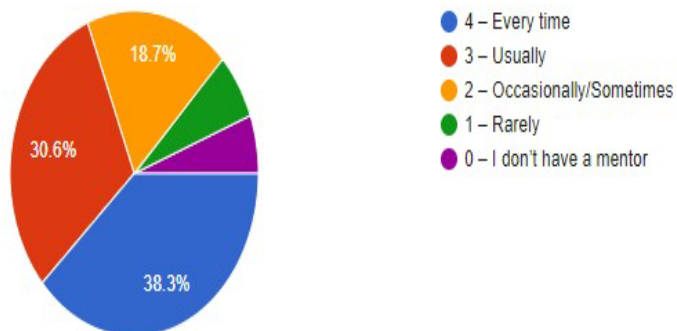


From the above chart indicate that the teachers illustrate the concepts through examples and applications. 43.8% of students from total responses give their responses every time. 29.8% of students from total responses give their responses usually. 15% of students from total responses give their responses occasionally/sometimes. On the basis of above description 88.6% students from total responses give positive response.

10. Your mentor does a necessary follow-up with an assigned task to you.

Your mentor does a necessary follow-up with an assigned task to you.

379 responses

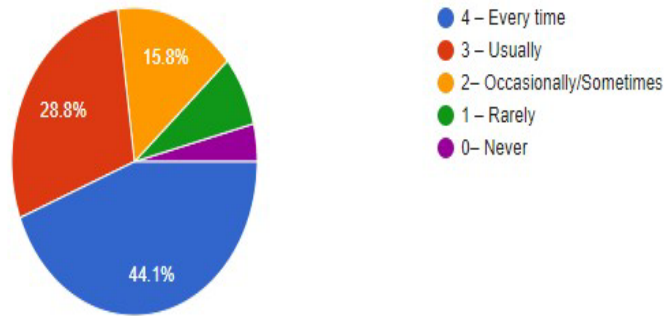


From the above chart indicate that the teachers illustrate the concepts through examples and applications. 38.3% of students from total responses give their responses every time. 30.6% of students from total responses give their responses usually. 18.7% of students from total responses give their responses occasionally/sometimes. On the basis of above description 87.6% students from total responses give positive response.

11. Teachers inform you about your expected competencies, course outcomes and program outcomes.

Teachers inform you about your expected competencies, course outcomes and program outcomes.

379 responses

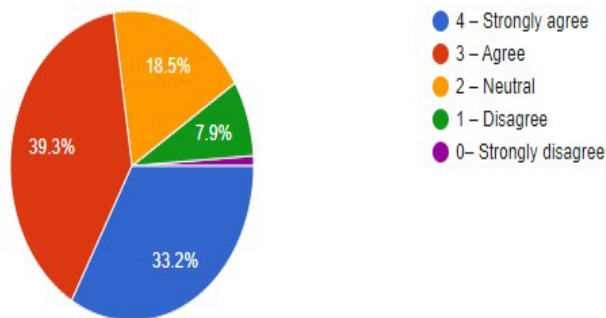


From the above chart indicate that the teachers inform you about your expected competencies, course outcomes and program outcomes. 44.1% of students from total responses give their responses every time. 28.8% of students from total responses give their responses usually. 15.8% of students from total responses give their responses occasionally/sometimes. On the basis of above description 88.7% students from total responses give positive response.

12. The institution provides multiple opportunities to learn and grow.

The institution provides multiple opportunities to learn and grow.

379 responses

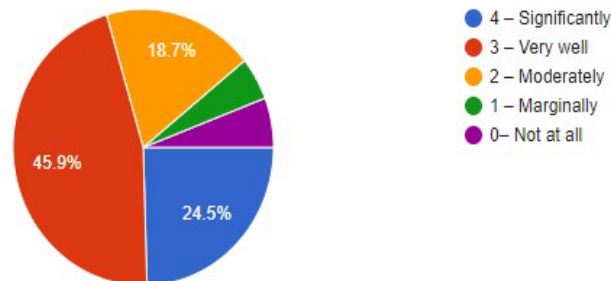


From the above chart indicate that the institution provides multiple opportunities to learn and grow. 33.2% of students from total responses give their responses strongly agree. 39.3% of students from total responses give their responses agree. 18.5% of students from total responses give their responses neutral. On the basis of above description 91% students from total responses give positive response.

13. The teaching and mentoring process in your institution facilitates you in cognitive, social and emotional growth.

The teaching and mentoring process in your institution facilitates you in cognitive, social and emotional growth.

379 responses

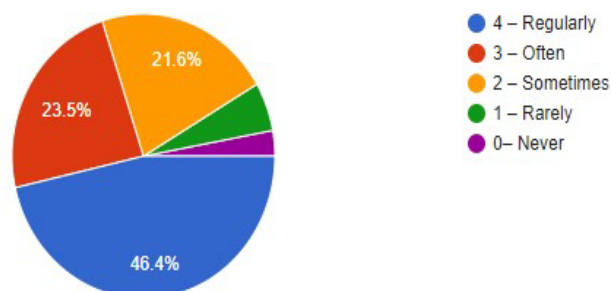


From the above chart indicate that the teaching and mentoring process in your institution facilitates you in cognitive, social and emotional growth. 24.5% of students from total responses give their responses significantly. 45.9% of students from total responses give their responses very well. 18.7% of students from total responses give their responses moderately. On the basis of above description 89.1% students from total responses give positive response.

14. The institute takes active interest in promoting internship, student exchange, field visit opportunities for students.

The institute takes active interest in promoting internship, student exchange, field visit opportunities for students.

379 responses

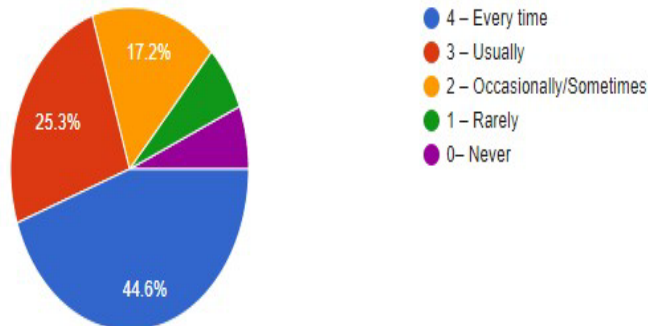


From the above chart indicate that the institute takes active interest in promoting internship, student exchange, field visit opportunities for students. 46.4% of students from total responses give their responses regularly. 23.5% of students from total responses give their responses often. 21.6% of students from total responses give their responses sometimes. On the basis of above description 91.5% students from total responses give positive response.

15. Was your performance in assignments discussed with you?

Was your performance in assignments discussed with you?

379 responses

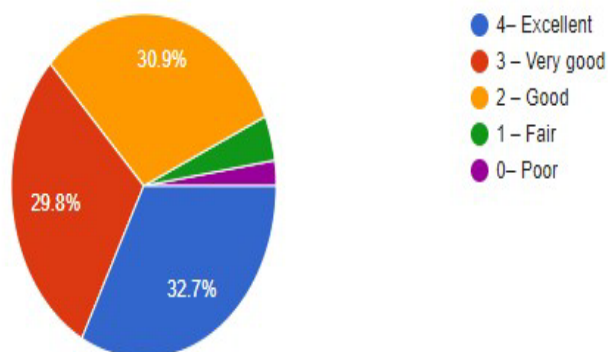


From the above chart indicate that was your performance in assignments discussed with you? 44.6% of students from total responses give their responses every time. 25.3% of students from total responses give their responses usually. 17.2% of students from total responses give their responses occasionally/sometimes. On the basis of above description 87.1% students from total responses give positive response.

16. The teacher's approach to teaching can best be described as

The teacher's approach to teaching can best be described as

379 responses

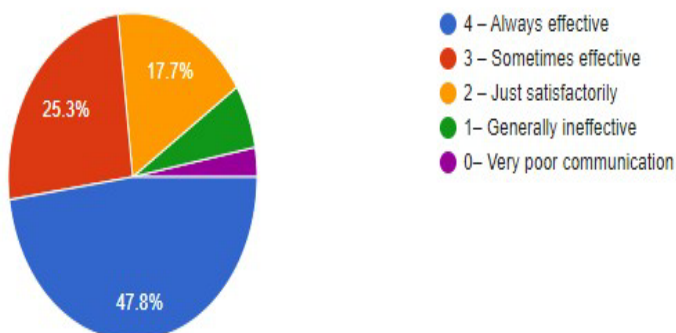


From the above chart indicate that the teacher's approach to teaching can best be described as. 32.7% of students from total responses give their responses excellent. 29.8% of students from total responses give their responses very good. 30.9% of students from total responses give their responses good. On the basis of above description 93.4% students from total responses give positive response.

17. How well were the teachers able to communicate?

How well were the teachers able to communicate?

379 responses

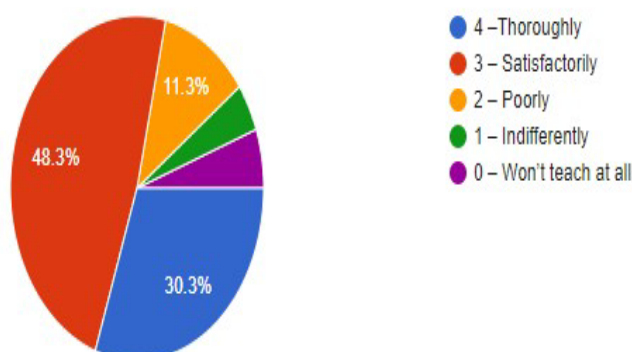


From the above chart indicate that how well were the teachers able to communicate? 47.8% of students from total responses give their responses always effective. 25.3% of students from total responses give their responses sometimes effective. 17.7% of students from total responses give their responses just satisfactorily. On the basis of above discription 90.8% students from total responses give positive response.

18. How well did the teachers prepare for the classes?

How well did the teachers prepare for the classes?

379 responses

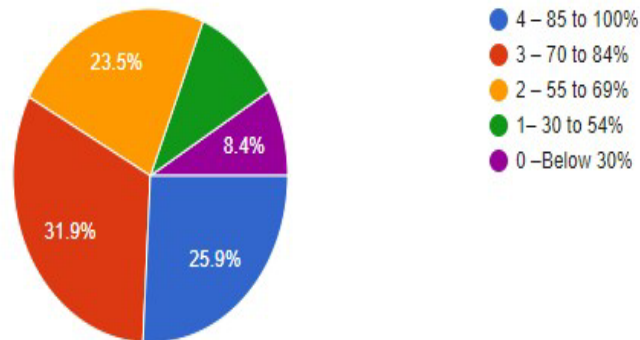


From the above chart indicate that how well did the teachers prepare for the classes? 30.3% of students from total responses give their responses thoroughly. 48.3% of students from total responses give their responses satisfactorily. 11.3% of students from total responses give their responses poorly. On the basis of above discription 89.9% students from total responses give positive response.

19. How much of the syllabus was covered in the class?

How much of the syllabus was covered in the class?

379 responses



From the above chart indicate that how much of the syllabus was covered in the class? 25.9% of students from total responses give their responses 85 to 100%. 31.9% of students from total responses give their responses 70 to 84%. 23.5% of students from total responses give their responses 55 to 69%. On the basis of above description 81.3% students from total responses give positive response.

From the chart given above, we have tried to find out the top factors that impressed the students the most. For that, we have considered the total percentage of responses received as 'Excellent', 'Strongly agree', 'Very Good' and 'Good'. From the chart given above, we have tried to find out the top factors that disappointed the students the most. For that we considered the total percentage of responses received as 'Average' and 'Needs Improvement'. The findings said that the students were impressed with almost all the factors, as the level of satisfaction is more than or equal to 80%. Also, the students were disappointed with very less number of factors, as the highest amongst the dissatisfaction levels is 20%.